

**ROYAL FORKLIFT (JIANGSU) CO., LTD.**

[www.ryforklift.com](http://www.ryforklift.com)

Add / No. 58, JIGUANG ROAD, QIANDENG, SUZHOU, JIANGSU, CHINA 215341  
TEL / (86) 512-36687077 FAX / (86) 512-36687058 Email / [info@ryforklift.com](mailto:info@ryforklift.com)

\*All Rights Reserved by RY Forklift.



**4-Wheel Electric  
Forklift Truck**

**1.5-3.5Ton**









## Comfort & Ergonomics

Smaller Steering Wheel  
Excellent Visibility  
Low Vibration & Noise  
Great Comfort and Productivity  
Ergonomic Designed Operation Handler  
Multifunctional LCD Display Meter

## Safety Operation

Low Truck Gravity  
Integral Heavy Duty Chassis  
Steering Self-control Device  
Mast Intelligent Buffering System  
Operator Presense Security System  
Fuzzy Logic Acceleration Control  
Mast Self-locking Device (Option)  
Mast Tilt-controlled Device (Option)  
Parking Brake Warning Buzzer (Option)

## High Efficiency & Productivity

Faster Lifting & Lowering Speed  
Precisely Steering  
Higher Acceleration Ability  
Superior Intelligent Control System  
Faster & Safer Battery Change  
Regeneration System

## Superior & Economic Serviceability

Open Structural Design  
Easy Service & Maintenance  
Reliable Hydraulic System  
Operator Presense Security System  
Malfunction Diagnose

## Reliable RY Forklift

Reliable Forklift Quality  
Perfect After Sales Service System  
Comprehensive Parts Supply System  
Experienced Technical Support Team

## COMFORT & ERGONOMICS

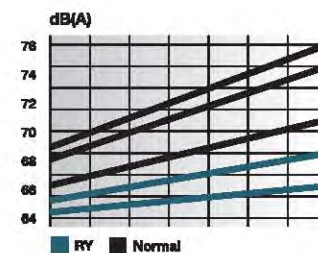
### Ergonomic Designed Operation Handler

According to the ergonomic theory, RY forklift works out the best moment arm of force, to have the operation handler in the best position. This can provide the operator with the best comfort of operation and also increase the better visibility.



### Excellent Visibility

- Newly designed backrest and fork carriage with excelled fork tip visibility
- Newly designed overhead guard with wide upward visibility
- Super wide view mast with hidden hose design dramatically improves the front and lifting visibility, ensuring the safety of operation.



### Low Vibration & Noise

Full AC system of motors and controller reduce the noise dramatically. The RY forklifts also reduce noise harmful to the operator and environment by treatment of hydraulic system.

### Smaller Steering Wheel

With 60mm less in diameter of the steering wheel, RY forklift dramatically improves the operation vision; it's easy to operate and reduce the operator's arm and shoulder's workload. The easy handling steering wheel column with tilt adjustment helps to provide the ideal operating position and improve the performance a lot.





## COMFORT & ERGONOMICS

### Great Comfort and Productivity

Taking ergonomic design into fully consideration, RY forklift enlarges the foot operation space by 20% compared to conventional forklifts to provide operators with a surprisingly comfortable way to get through each working minute.



### Multifunctional LCD Display Meter

The large and easy-to-see Multifunctional LCD display meter can have the operator check on all operational status at a glance. The key components and connectors have been protected to meet rain-proof and dust-proof level.



## HIGH EFFICIENCY & PRODUCTIVITY

### Superior Intelligent Control System



This device can adjust the lifting & lowering speed, travelling speed, acceleration & driving brake time according to different working condition, in order to improve the working efficiency and improve the comfort of the operator.

### Higher Acceleration Ability

20% higher acceleration ability, surprisingly shortens the working time at the same working distance, and dramatically improves the working efficiency.



### Precisely Steering

The new axle provides wider steering angles to 85 degree to present a superior smart turning radius of RY Forklift, and plus the compact design, RY forklift can navigate the narrow and congested space.



### Faster Lifting & Lowering Speed

Considering safety and energy-saving, RY forklift attaches close attention to the development of hydraulic system, and increases lifting and lowering speed to ensure the productivity.



### Faster & Safer Battery Change

With side-door battery change design, the battery can be easily taken out from side by using a pallet truck, stacker or forklift. Compare to conventional forklifts which needs to take battery from top of the overhead guard, RY battery forklift change is faster, easier and safer.



### Regeneration System

RY forklifts are adopted new energy-saving system. When forklift slowing down during travel, or parking, or braking or driving on the rampway during working, the battery will get recharged and can save energy in order to improve working efficiency by prolonging working hours.



## SAFETY



### Low Truck Gravity

According to the Gravity Balance Principle, low gravity design is applied to RY Forklift to ensure the stable and safe operations.

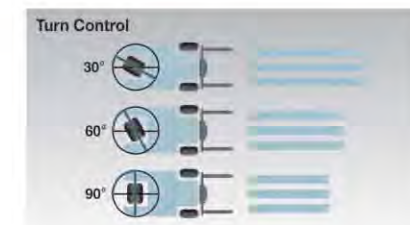
### Integral Heavy Duty Chassis

An integral heavy duty chassis provides the driver with 20% more protection from falling loads.



### Steering Self-control Device

RY 4-wheel battery forklift can adjust travelling speed according to the turning angle with steering self-control device. It can reduce some accidents due to high travelling speed at a bigger turning angle, ensuring more safety.



### Mast Intelligent Buffering System



With intelligently declining buffer sensor on the two ends of the cylinder, the falling speed of the fork slows down automatically before it is 10cm from the ground, and the lifting speed to the top also slows down to avoid quick hit on the top, it super increases the safety of the goods and forklifts.



## SAFETY

### Mast Self-locking Device (Option)

For conventional forklifts, when mast extended and forklift powered off, the operator can still lower the mast. For RY forklift, with optional mast self-locking device, the forklift will be locked and lifting & lowering can not be operated in order to avoid from some unexpected accidents.



### Operator Presense Security System

With operator presense security system, RY forklift can have the forklift stop moving forward when the operator leaves the seat which ensuring the safety of goods and people around at emergency situation.



### Parking Brake Warning Buzzer (Option)

An automatic-style parking brake ensures of the convenience and safety. The warning buzzer will sound when the operator leaves the seat without parking the forklift.

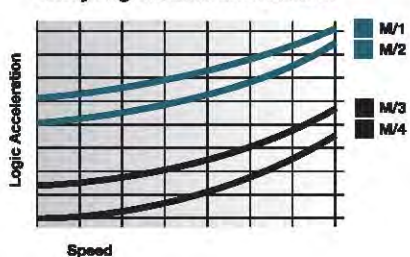


### Mast Tilt-controlled Device (Option)

With mast tilt-controlled device, RY forklift can decelerate as the lifting height increases when the tilt angle over 3M. Thus, it can prevent the cargo from falling when lifting and avoid unnecessary loss and accidents.



Fuzzy Logic Acceleration Control



### Fuzzy Logic Acceleration Control

With this system, RY 4-wheel battery forklift enables the operator very accurate forklift truck control. A forklift truck acceleration curve is selected according to the speed with which pedal is depressed.

## SUPERIOR & ECONOMIC SERVICEABILITY

### Reliable Hydraulic System



With reliable hydraulic design and components, the hydraulic components are with high durability which can lower the cost in repair and replacement.

### Easy Service & Maintenance



The bolt mounted foot step cover can be easily taken off to do inspection and service.

### Open Structural Design

The open structural design combined with the location of different system of forklift, RY forklift engineers design this forklift with an idea to assemble & disassemble from different ways. This design dramatically improves the serviceability and lowers the service labor cost.



### Malfunction Diagnose

RY 4-wheel battery forklifts are equipped with the central controller system and divided function system. When there is any malfunction happens, RY forklift will have wrong code and warning. The operator can tell the reason of the malfunction easily and then to service the truck more accurate and faster.

## RELIABLE RY FORKLIFT

### Reliable Forklift Quality



With the international testing standard, more reliable supplier chain, higher quality control to ensure the stability and quality of forklifts.

### Experienced Support Team



There are very experienced technical support team in RY forklift to provide professional training to clients from different country.

### Comprehensive Parts Supply System



Parts supply system complied with multi-functional parts warehouse and I-NET system, RY forklift can provide clients with different type spare parts in time and accuracy.

### Perfect After Sales Service System

With perfect after sales service and I-NET system, RY forklift can analyze each forklift issue easier, faster and more accurate.



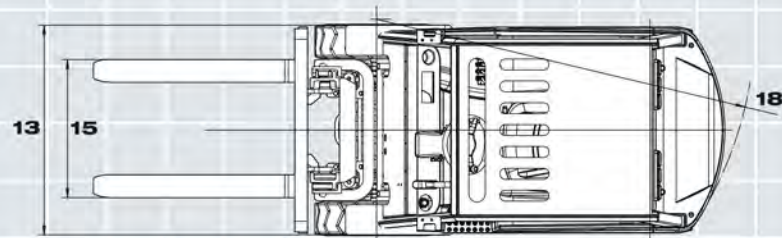
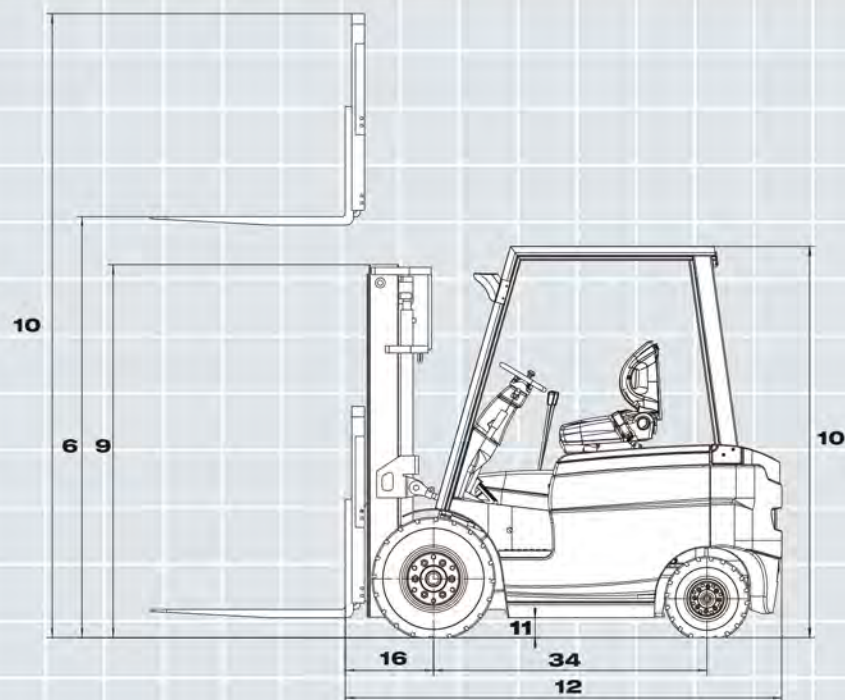
### Maintenance free AC motor

Maintenance free AC motor keeps forklifts releasing less heat and ensuring higher efficiency. It adequately conquered the problem of overheat, low efficiency and frequent maintenance required which is common to DC motors. Meanwhile, it increases total speed by 20% and acceleration 100%, consequently enhances the working efficiency greatly.

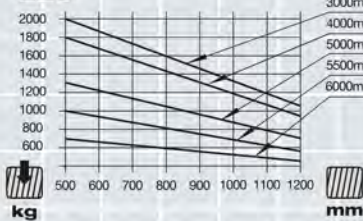
### Functions and Characters

Full AC system (pump and drive motor)  
Error Code Automatic Alarm Function  
Full Meter Track and Display Function  
Environment friendly lowest noise  
Power Match with Electric Controller  
Excellent Water-proof & Dust-proof Component  
Automatic Speed Control System When Swerve  
Great Traction Even on Wet or Uneven Surfaces

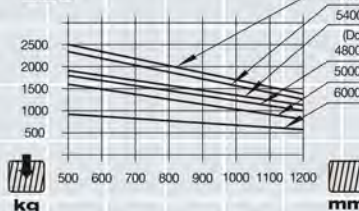




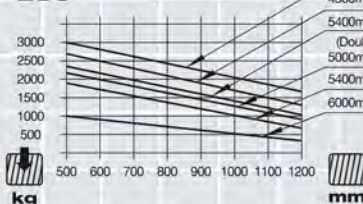
E20



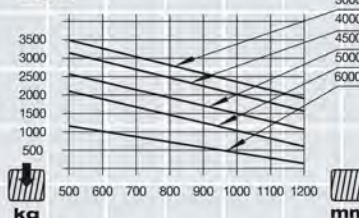
E25



E30



E35



SPECIFICATION	1	Manufacturer		RY	RY	RY	RY	
	2	Model		E15	E20/25	E30	E35	
	3	Power Type		Electric	Electric	Electric	Electric	
	4	Rated Load Capacity	kg	1500	2000/2500	3000	3500	
	5	Load Centre	mm	500	500	500	500	
DIMENSIONS	6	Rated Lift Height	mm	3000	3000	3000	3000	
	7	Free Lift Height	mm	135	140	145	145	
	8	Tilting Angle (F/R, α°/β°)	Deg	6°/12°	6°/12°	6°/12°	6°/12°	
	9	Height When Mast Lowered	mm	2015	2045	2060	2060	
	10	Height to Safeguard	mm	2130	2150	2150	2150	
	11	Min. Ground Clearance	mm	110	120	130	130	
	12	Length (to Fork Face)	mm	2140	2388	2518	2578	
	13	Width	mm	1080	1150	1225	1225	
	14	Fork Size (L×W×T)	mm	920×100×35	1070×125×40	1070×125×45		
	15	Fork Spread (Min./Max.)	mm	200/920	250/1040	250/1100	250/1100	
	16	Overhang Front	mm	420	478	483	483	
	17	Overhang Rear	mm	352	410	435	495	
	18	Min. Turning Radius	mm	1956	2080	2260	2320	
PERFORMANCE	19	Height when Mast Lifted	mm	3984	4145	4160	4160	
	20	Working Aisle Width with Pallet (Ast)*, 1000×1200 Crossways	mm	3556	3925	4080	4140	
	21	Working Aisle Width with Pallet (Ast)*, 800×1200 Lengthways	mm	3756	4025	4180	4240	
	22	Travel Speed (Full Load)	km/h	12	12	12	12	
	23	Travel Speed (No Load)	km/h	13	13	13	13	
	24	Lifting Speed (Full Load)	mm/s	290	290	280	280	
	25	Lifting Speed (No Load)	mm/s	400	400	400	400	
	26	Gradeability (Full Load)	%	15	15	15	12	
	27	Gradeability (No Load)	%	15	15	15	13	
	28	Service Brake (Operation/Control)		Foot/Powershift		Foot/Powershift		
	29	Parking Brake (Operation/Control)		Hand/Mechanical		Hand/Mechanical		
	DRIVE	30	Tyre (FrontX2)		6.50-10-10PR	7.00-12-12PR	28×9-15-12PR	28×9-15-12PR
		31	Tyre (RearX2)		5.0-8-8PR	18×7-8-14PR	18×7-8-14PR	18×7-8-14PR
32		Tread (Front)	mm	890	970	1000	1000	
33		Tread (Rear)	mm	920	950	970	970	
34		Wheelbase	mm	1380	1500	1600	1600	
WEIGHT	35	Total Weight (Include Battery Box)	kg	2950	4060 /4260	5150	5570	
	36	Front Axle Weight Distribution (Full Load)	kg	4537	5180/5823	7210	8070	
	37	Rear Axle Weight Distribution (Full Load)	kg	823	880 /937	940	1000	
	38	Front Axle Weight Distribution (No Load)	kg	1655	1675/1665	2318	2520	
	39	Rear Axle Weight Distribution (No Load)	kg	2175	2385 / 2595	2832	3050	
DRIVE	40	Drive Motor	kw	7.5	11	12	12	
	41	Pump Motor	kw	9.2	11	12	12	
	42	Standard Battery	V/Ah	48/450	48/560	80/500	80/500	
	43	Controller Type		AC	AC	AC	AC	
	44	Controller Manufacturer		ZAPI	ZAPI	ZAPI	ZAPI	
	45	Operating Pressure for Attachment	Mpa	14.5	17.5	17.5	17.5	

\*All Rights Reserved by RY Forklift.